



Oxbow, Back Hulme Street, Salford

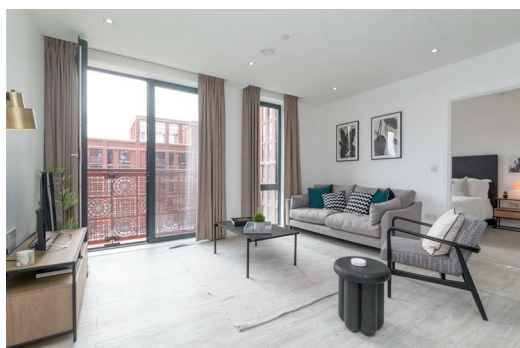
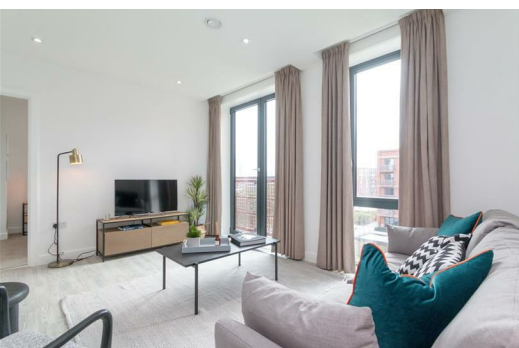
£1,119 PCM

Introducing Oxbow, an impressive collection of apartments and townhouses in the vibrant hub of Salford. These 1-3 bed furnished or unfurnished homes come with balconies, an on-site gym, 24hour team and an impressive podium garden. All this for you (and your pets) to enjoy!

Based in the heart of Salford on the Chapel Street corridor, with easy access to the city centre, the amenities on Oxbow's doorstep will not disappoint. Both Sainsbury's supermarket and the Co-op are nearby, whilst the beautiful greens of Peel Park are just opposite the development. You can benefit from a 10 minute walk to Salford Crescent and Central train stations, and Spinningfields is just 15 minutes away..

Inside your 2-bedroom apartment, you'll be delighted with what's included. A spacious open plan living area welcomes you to the bright, stylish home. Starting with the living space, you'll have a modern kitchen that is kitted out with Zanussi and Indesit appliances, housed within sleek units and cupboards. The lounge, the generously sized centrepiece of the apartment, offers the perfect set-up for relaxing and entertaining. Not forgetting the balcony of course; included with the majority of units, this neat addition grants you unlimited fresh air.

Entering the bedrooms, you can enjoy carpeted floors and a handy full length mirror formed upon the fitted wardrobes - the building owners really have thought of everything when it comes to city living. The bathroom, jack-and-jill layout, includes both a bath and shower, providing you with nothing but choice. The second bathroom attached to the bedroom is complete with a spacious walk in shower.





Energy Efficiency Rating		Environmental Impact (CO <sub>2</sub> ) Rating	
Rating	Score	Rating	Score
A	92-100	A	1-10
B	81-91	B	11-20
C	69-80	C	21-30
D	55-68	D	31-40
E	46-54	E	41-50
F	39-45	F	51-60
G	34-38	G	61-70

England & Wales